



Latitude:34.03181, Longitude:-93.50010

Route:26 Section:03 Log:11.76

Arnold Road ID:55x26x3xA, Arnold Log mile:11.726

District 03, Pike County

Owner: 1-State Highway Agency

EAST EDGE OF DELIGHT



34.03181, -93.50010



Bridge #02735(Routine)

SH 26 - 03 - 11.76 over WOLF CREEK

Location: EAST EDGE OF DELIGHT

Team Lead: John King Inspection Date: July 06, 2021

IDENTIFICATION	
(1) State Names	Arkansas
(8) Structure Number	02735
(5) Inventory Route	26
(2) Highway Agency District	03
(3) County Code	109-Pike County, Arkansas
(4) Place Code	0
(6) Features Intersected	WOLF CREEK
(7) Facility Carried	SH 26 - 03 - 11.76
(9) Location	EAST EDGE OF DELIGHT
(11) Mile Point	11.76 mi
(12) Base Highway Network	No
(13) LRS Inventory Rte & Subrte	0000000000
(16) Latitude	34.03181
(17) Longitude	-93.5001
(98) Border Bridge State Code	
(99) Border Bridge Structure No.	
STRUCTURE TYPE AND MATERIAL	
(43) Main Structure Type	32
Material	3-Steel
Type	2-Stringer/Multi-beam or girder
(44) Approach Structure Type	00
Material	0-Other
Type	0-Other
(45) No. of Spans in Main Unit	3
(46) No. of Approach Spans	0
(107) Deck Structure Type	1-Concrete Cast-in-Place
(108) Wearing Surface/Protective System	
Type of Wearing Surface	6-Bituminous
Type of Membrane	0-None
Type of Deck Protection	0-None
AGE AND SERVICE	
(27) Year Built	1951
(106) Year Reconstructed	0
(42) Type of Service	15
On	1-Highway
Under	5-Waterway
(28) Lane	
On	2
Under	0
(29) Average Daily Traffic	1610
(30) Year of ADT	2018
(109) Truck ADT	1 %
(19) Bypass, Detour Length	12 mi
GEOMETRIC DATA	
(48) Length of Maximum Span	50 ft
(49) Structure Length	152 ft
(50) Curb or Sidewalk Width	
Left	1 ft
Right	1 ft
(51) Bridge Roadway Width Curb to Curb	24 ft
(52) Deck Width Out to Out	26.5 ft
(32) Approach Roadway Width (W/Shoulders)	20 ft
(33) Bridge Median	0-No median
(34) Skew	0 Deg
(35) Structure Flared	No flare
(10) Inventory Route Min Vert Clear	99.99 ft
(47) Inventory Route Total Horiz Clear	25.9 ft
(53) Min Vert Clear Over Bridge Rdwy	99.99 ft
(54) Min Vert Underclear	0 ft
Ref:	
(55) Min Lat Underclear RT	99.9 ft
Ref:	
(56) Min Lat Underclear LT	0 ft
NAVIGATION DATA	
(38) Navigation Control	0-No navigation control on water
(111) Pier Protection	1-Navigation protection not requ
(39) Navigation Vertical Clearance	0 ft
(116) Vert-Lift Bridge Nav Min Vert Clear	0 ft
(40) Navigation Horizontal Clearance	0 ft

CLASSIFICATION	
(112) NBIS Bridge Length	Y
(104) Highway System	0
(26) Functional Class	6-Rural Minor Arterial
(100) Defense Highway	0-The inventory route is not a S
(101) Parallel Structure	N-No parallel structure exists.
(102) Direction of Traffic	2 - way traffic
(103) Temporary Structure	
(105) Federal Lands Highways	0-N/A
(110) Designated National Network	0-The inventory route is not part of
(20) Toll	3-On free road. The structure is toll
(21) Maintain	1-State Highway Agency
(22) Owner	1-State Highway Agency
(37) Historical Significance	5-Bridge is not eligible for the NRHP
CONDITION	
(58) Deck	6
(59) Superstructure	7
(60) Substructure	6
(61) Channel & Channel Protection	6
(62) Culverts	N
LOAD RATING AND POSTING	
(31) Design Load	2-M 13.5 / H 15
(63) Operating Rating Method	1
(64) Operating Rating	
Type	1-Load Factor(LF)
Rating	36
(65) Inventory Rating Method	1-Load Factor(LF)
(66) Inventory Rating	
Type	3
Rating	21
(70) Bridge Posting	3-10.0 - 19.9 % below
(41) Structure Open/Posted/Closed	P-Posted for load (may include o
APPRAISAL	
(67) Structural Evaluation	5
(68) Deck Geometry	4
(69) Clearances, Vertical/Horizontal	N
(71) Waterway Adequacy	7
(72) Approach Roadway Alignment	7
(36A) Bridge Railings	1-Inspected feature meets currently a
(36B) Transitions	0-Inspected feature does not meet cur
(36C) Approach Guardrail	1-Inspected feature meets currently a
(36D) Approach Guardrail Ends	1-Inspected feature meets currently a
(113) Scour Critical Bridges	5-Bridge foundations determined to be
PROPOSED IMPROVEMENTS	
(75) Type of Work	Replacement of bridge or other
(76) Length of Structure Improvement	182 ft
(94) Bridge Improvement Cost	\$ 0
(95) Roadway Improvement Cost	\$ 156
(96) Total Project Cost	\$ 563
(97) Year of Improvement Cost Estimate	2002
(114) Future ADT	1505
(115) Year of Future ADT	2028

INSPECTIONS *			
(90) Inspection Date			07/2021
(91) Frequency			24 Months
(92) Critical Feature Inspection	Done	Freq. (Mon)	Date
A: Fracture Critical Detail	No		
B: Underwater Inspection	No		
C: Other Special Inspection	No		
* The inspection date and frequency information in this box contains the current NBI date and frequency information. Please refer to the report header for the date this inspection was conducted.			



Bridge #02735(Routine)

SH 26 - 03 - 11.76 over WOLF CREEK

Location: EAST EDGE OF DELIGHT

Team Lead: John King, Inspection Date: July 06, 2021

ELEM	DESCRIPTION	UNITS	TOTAL	CS1	CS2	CS3	CS4
12	Reinforced Concrete Deck	SF	3654	3624	20	10	0
1120	Efflorescence/Rust Staining	SF	20	0	20	0	0
1130	Cracking (RC and Other)	SF	10	0	0	10	0
510	Wearing Surfaces	SF	3654	3589	65	0	0
3220	Crack (Wearing Surface)	SF	60	0	60	0	0
3210	Delam/Spall/Patched Area/Pothole	SF	5	0	5	0	0
107	Steel Open Girder/Beam	LF	750	738	12	0	0
1000	Corrosion	LF	12	0	12	0	0
515	Steel Protective Coating	SF	6187	6187	0	0	0
(107)							
7/15/2020...Beams have been painted per this inspection...							
(107-1000)							
Rusted various locations typical top of beam							
(107-515)							
7/15/2020...Piling has been painted per this inspection...							
215	Reinforced Concrete Abutment	LF	68	68	0	0	0
225	Steel Pile	EA	10	9	1	0	0
1000	Corrosion	EA	1	0	1	0	0
(225)							
STEEL PILES #1,2,3 &4 @BT. #2 AND PILES #1,2,&3 @BT. #3 HAVE BEEN REPAIRED; SEE FORM 3 09/05/2002.--PILE #5 @ BT. #2 AND PILES #4,&5 @ BT.#3 HAVE MINOR SECTION LOSS;SEE FORM 3 - 09/05/2002.---- paint lost to piles per 2018 inspection.....7/15/2020...Piling has been painted per this inspection...							
(225-1000)							
Bent 2 steel column at top							
234	Reinforced Concrete Pier Cap	LF	98	96	2	0	0
1010	Cracking	LF	1	0	1	0	0
1080	Delamination/Spall/Patched Area	LF	1	0	1	0	0
301	Pourable Joint Seal	LF	96	96	0	0	0
(301)							
Joints are covered with asphalt can't see...							
311	Movable Bearing	EA	15	7	8	0	0

Team Lead: John King, **Inspection Date:** July 06, 2021

ELEM	DESCRIPTION	UNITS	TOTAL	CS1	CS2	CS3	CS4
1000	Corrosion	EA	8	0	8	0	0
515	Steel Protective Coating	SF	52	52	0	0	0
(311)							
ALL BEARINGS ARE RUSTING ENTIRE BRIDGE.... 7/15/2020...Bearings have been painted per this inspection...							
313	Fixed Bearing	EA	15	15	0	0	0
515	Steel Protective Coating	SF	52	0	52	0	0
3410	Chalking (Steel Protective Coatings)	SF	52	0	52	0	0
(313)							
ALL BEARINGS ARE RUSTING ENTIRE BRIDGE..... 7/15/2020...Bearings have been painted per this inspection...							
330	Metal Bridge Railing	LF	304	0	304	0	0
1000	Corrosion	LF	304	0	304	0	0
(330)							
rust area in various location of rail...							
331	Reinforced Concrete Bridge Railing	LF	304	264	40	0	0
1130	Cracking (RC and Other)	LF	40	0	40	0	0
(331)							
concrete post							



Typical bottom side of deck



Posting end of bridge 2021



Typical deck photo 2021



Alignment 2021



Posting beginning of bridge 2021



Deck



Underside of deck typical all spans



Alignment



Posting beginning of bridge



Posting end of bridge



Posting beginning of bridge



Posting end of bridge



Deck



Underside of deck typical all spans



ALL BEARINGS ARE RUSTING ENTIRE BRIDGE H-PILE AND BEAMS ALSO RUSTING VARIOUS LOCATIONS.



BEAMS RUSTING VARIOUS LOCATIONS



SS



BOTTOM OF DECK TYPICAL



DECK PHOTO



H-PILE RUSTING VARIOUS LOCATIONS



AL



Elevation



Span 1



Bent 2



Bent 3



Bent 2, span 2 side



Bent 3, span 3 side above pile 4



Posting beginning of bridge 2021



Typical deck photo 2021



Superstructure photo



Photo taken of bent 3



Posting end of bridge 2021



Typical bottom side of deck



Superstructure photo



Photo taken of bent 3



Bent 2 steel column at top

Maintenance Needs

Date Reported: 07/06/2021
Priority: D- Routine
Type of Work: Repair
Status: Open
Component: Deck

Deficiency Description

Asphalt coming apart at bent 3 joint... note asphalt is mounded up.
other joints are starting to crack also.

Remarks



Asphalt coming apart at bent 3 joint... note asphalt
is mounded up



Bridge #02735(Routine)
SH 26 - 03 - 11.76 over WOLF CREEK
Location: EAST EDGE OF DELIGHT

Team Lead: John King Inspection Date: July 06, 2021

Date Reported: 07/06/2021
Priority: G - General/ Preventive maintenance
Type of Work: Repair
Status: Open
Component: Substructure

Deficiency Description

Erosion starting at end of bridge
water is coming from top side along abutment wall left to right.

Remarks



Erosion starting at end of bridge



Bridge #02735(Routine)
SH 26 - 03 - 11.76 over WOLF CREEK

Location: EAST EDGE OF DELIGHT

Team Lead: John King Inspection Date: July 06, 2021

Inspection Comments

7/02/2018 AL,SS,DECK,DEF.PHOTOS TAKEN...7/15/2020...AL, Elevation, Deck, Def photos taken. Soundings taken this inspection...07/06/2021 alignment,elevation, deck, posting photos taken

Deck Notes

1.5 ASPHALT OVERLAY-----SPAN 3 HAS TRANSV. CRACKS W/EFFL EVERY 3-5 FEET SPACE.....

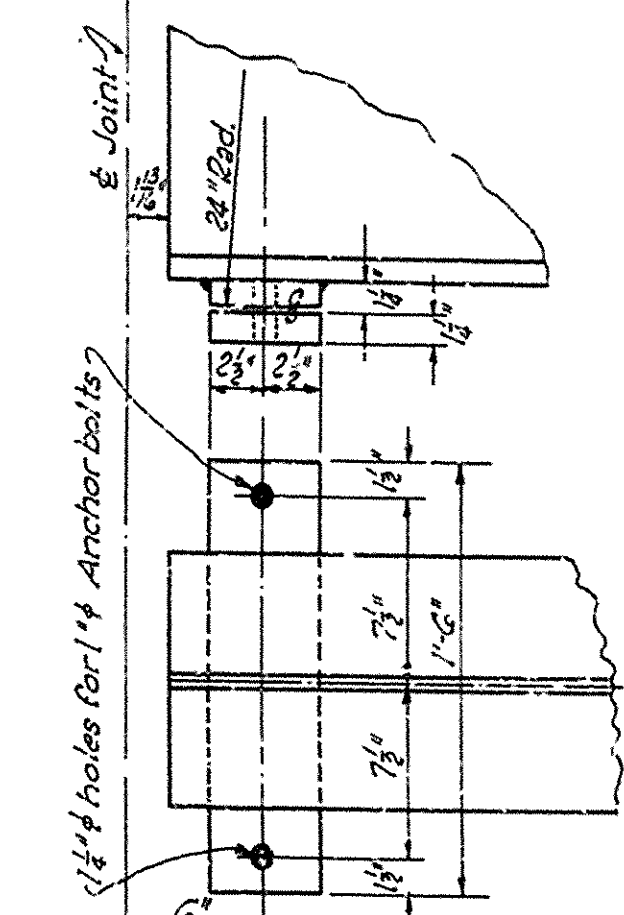
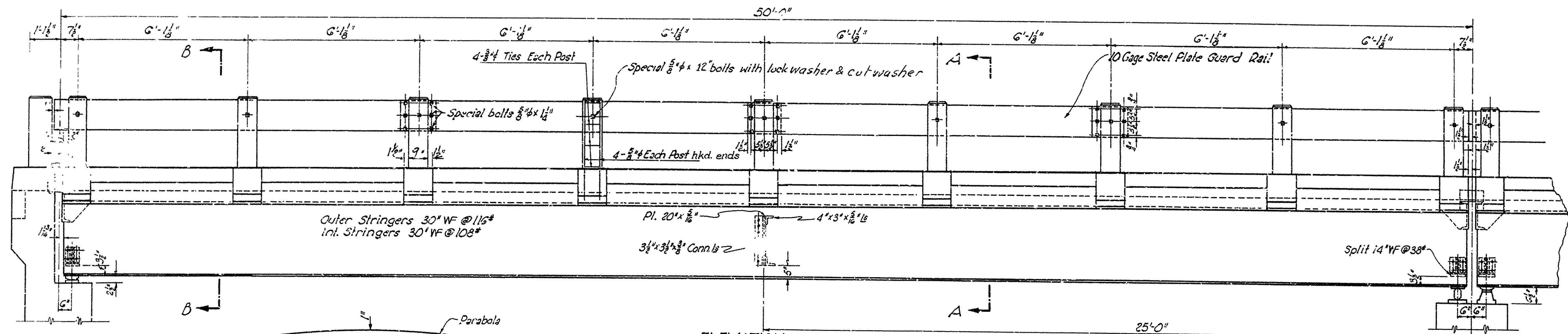
Superstructure Notes

ALL BEARINGS ARE RUSTING ENTIRE BRIDGE . BEAMS ALSO RUSTING VARIOUS LOCATIONS. 07/06/2021 bearings are starting to show signs of rust. Bent 2 steel column at top.

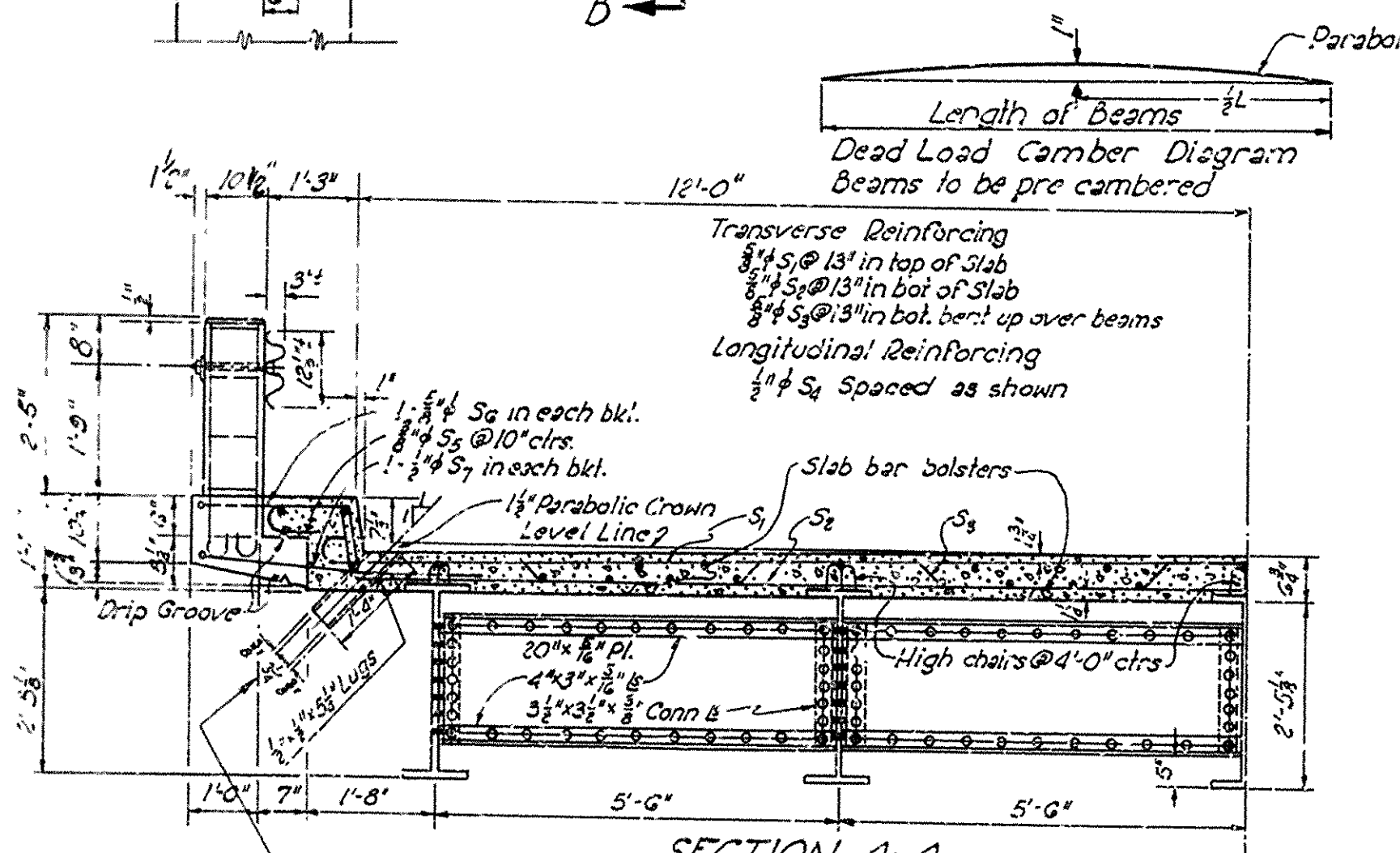
Substructure Notes

STEEL PILES AT BENTS 2,& 3 HAVE CONCRETE ENCASEMENT SOME STEEL IS EXPOSED AT CAP.STEEL PILES #1,2,3 &4 @BT. #2 AND PILES #1,2,&3 @BT. #3 HAVE BEEN REPAIRED; SEE FORM 3 09/05/2002.---PILE #5 @ BT. #2 AND PILES #4,&5 @ BT.#3 HAVE MINOR SECTION LOSS;SEE FORM 3 - 09/05/2002

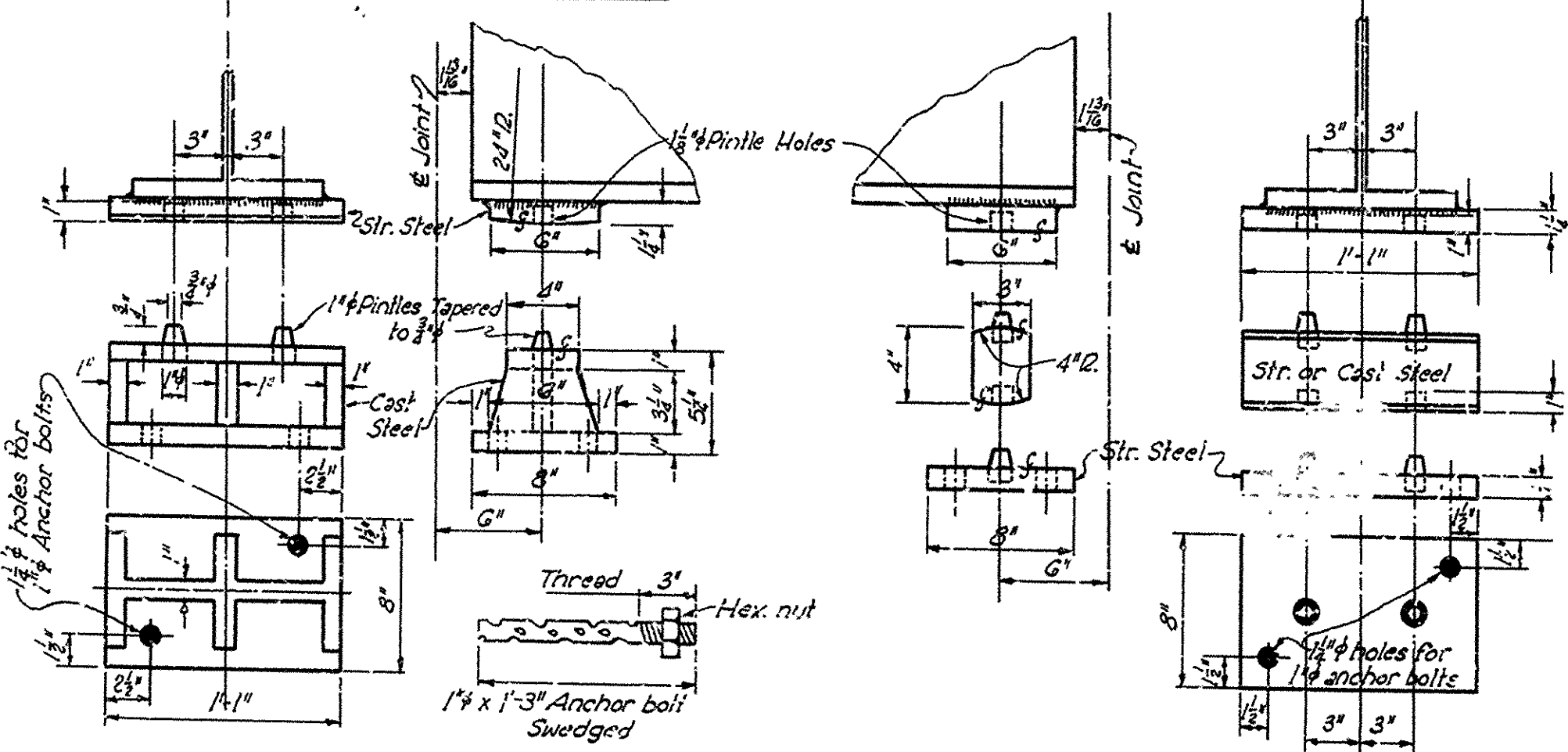
FED. ROAD DIST. NO.	STATE	PROJ. NO.	FISCAL YEAR	SHEET NO.	TOTAL SHEETS
8	ARK.			2	1
STATE JOB NO.					



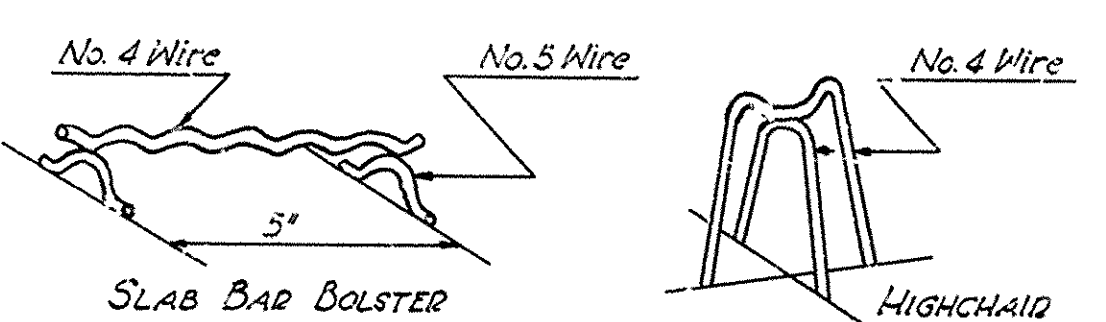
BEARING PLATES AT ABUTMENTS
Scale: 1/2" = 1'-0"



SECTION A-A



DETAILS OF BEARINGS AT INTERMEDIATE BENTS
Scale: 1/2" = 1'-0"

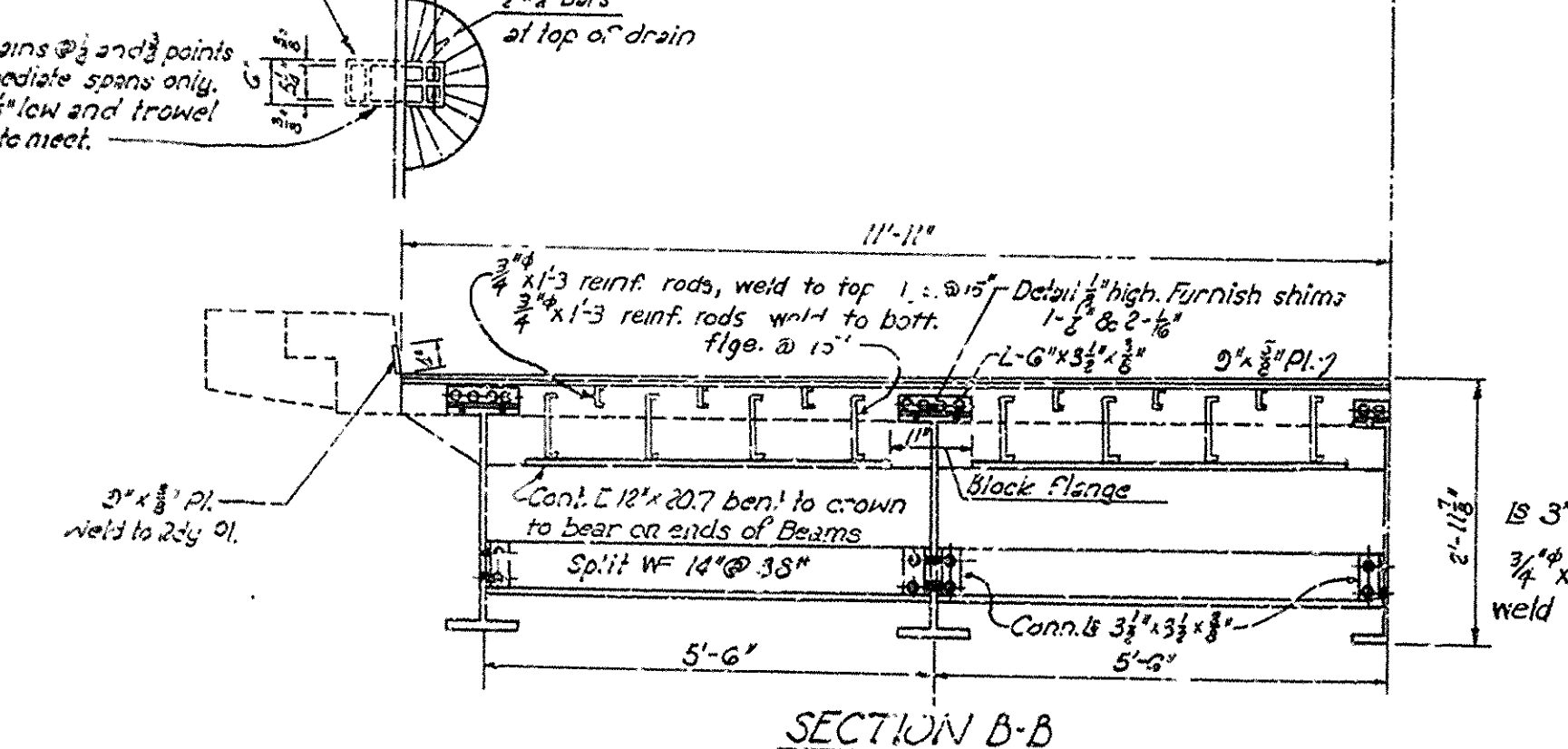


SLAB BAR BOLSTER
All reinforcing steel shall be accurately located in the forms and firmly held in place by means of steel wire chair supports adequate to prevent displacement during the course of construction and to keep the steel a proper distance from the forms. Bar supports are to be sufficient in number and sufficiently heavy to properly carry the steel they support. Wire sizes shall not be less than shown. Wire supports will not be paid for directly but will be considered subsidiary to the item of "Reinforcing Steel." Snap lists and diagrams must be submitted for approval.

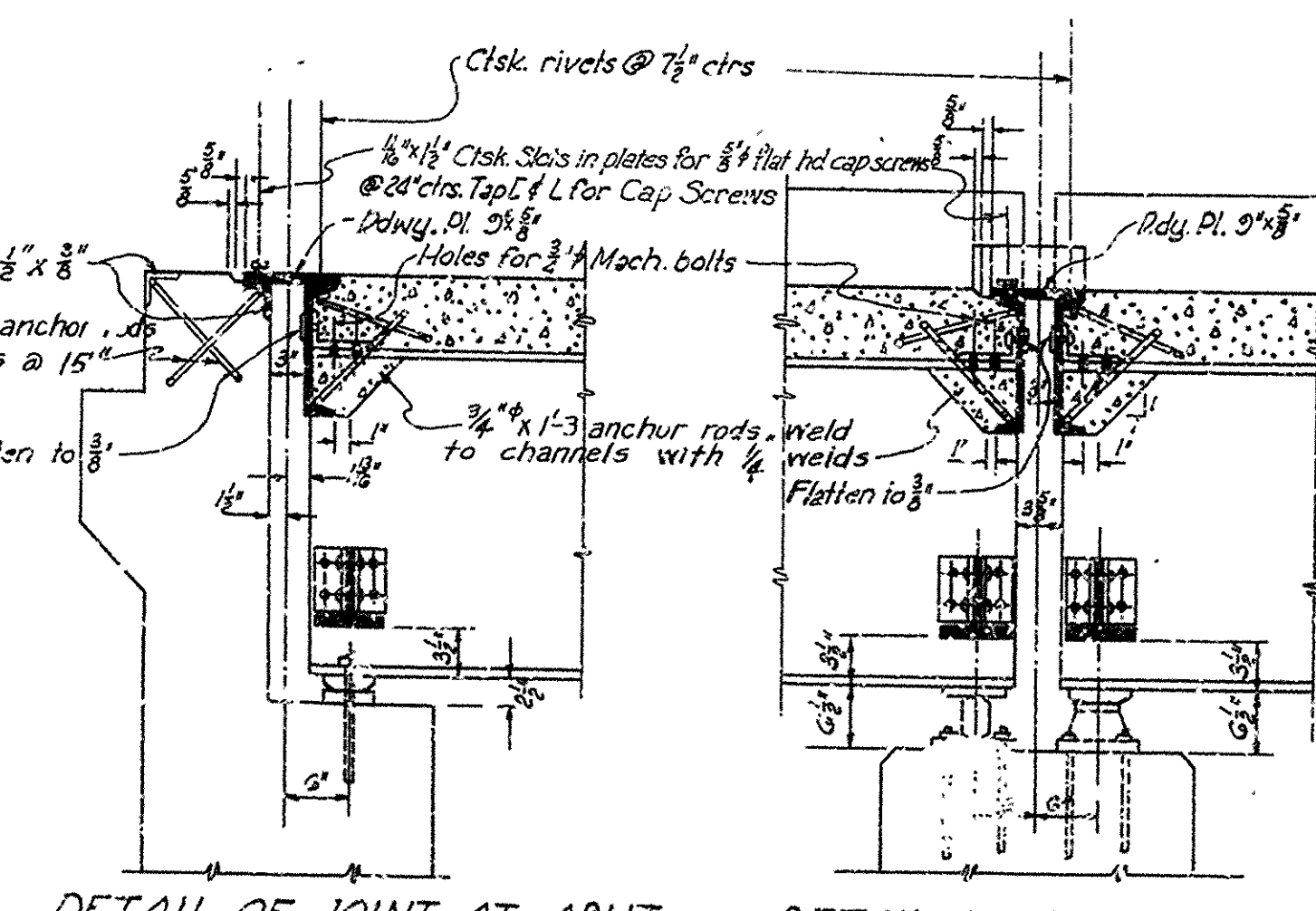
GENERAL NOTES

All concrete to be Class "C". All exposed corners to have 3/8" chamfer unless otherwise noted.
Rivets 3/8". Open holes 1/2". Where bolts are indicated use machine bolts.

Structural shapes of equal or greater strength may be substituted for shapes shown but payment will be made on basis of shapes shown or those actually used whichever is the lesser.
All welded connections to be 3/8" fillet shop welds except as noted.
Shop Paint: All structural steel except surfaces in contact with concrete shall be given one coat of red lead and raw linseed oil before shipment.
Field Paint: First, White Lead tinted with Lamp Black. Second Coat, Aluminum.
All bearing and roadway expansion devices to be paid for as "Structural Steel in Beam Spans."
Weight of C.I. Drains to be included in weight of Reinforcing Steel.
Care shall be exercised to obtain 90° angle between flange and web of beams at bearing points.
This drawing shows general features of design only. Shop drawings shall be made in accordance with the Specifications, submitted and approval secured before fabrication is begun.
In order to secure a good riding surface it will be required that the floor slab be struck off from curb to curb with a half span length longitudinal strike-off. The strike-off shall be sufficiently stiff so as to have no appreciable vertical deflection.
SPECIFICATIONS: Arkansas State Highway Commission Standard Specifications for Road and Bridge Construction. Adopted March 1st, 1940.
Bearings shall be finally sealed on 3 layers of bur'ap saturated with red lead. This work and material included in the unit price bid for "Structural Steel in Beam Spans."
The steel plate guard rail shall be of the type shown or an equivalent rigid type as approved by the Engineer. The rail, including concrete posts, shall be paid for at the unit price bid per linear foot for "Steel Plate Guard Rail".



SECTION B-B



DETAIL OF JOINT AT ABUT. Section on E
DETAIL OF JOINT AT INT. BENT Section at Gutter
Scale: 1/2" = 1'-0"

LIST OF BENT BARS

MARK	SIZE	LENGTH
S ₁	3/8" φ	23'-0"
S ₂	3/8" φ	26'-0"
S ₃	3/8" φ	20'-0"
S ₄	3/8" φ	3'-0"
S ₅	3/8" φ	8'-0"
S ₆	3/8" φ	8'-0"
S ₇	3/8" φ	8'-0"

BENDING DIAGRAM

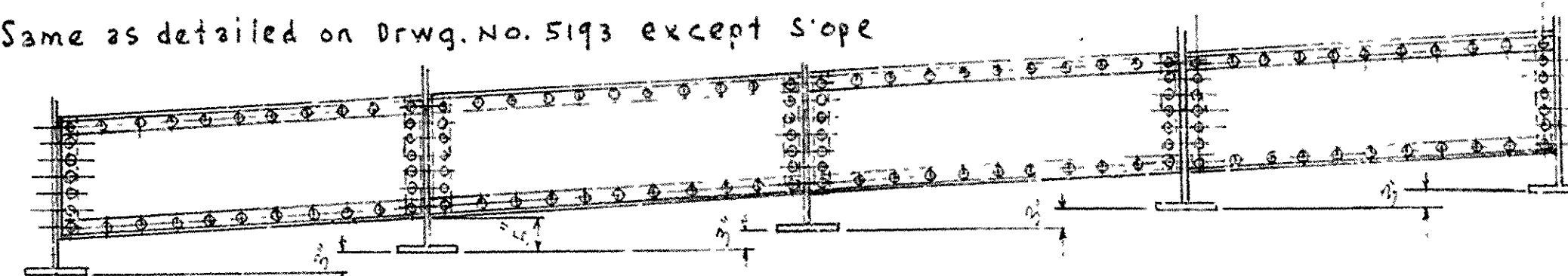
DETAILS OF
STANDARD 50'-0" I-BEAM SPAN
24'-0" CLEAR ROADWAY 1'-0" CURB

REVISED 7-2-48
REVISED 7-30-48 Handrail
REVISED 9-13-48 Handrail
REVISED 4-25-50 Cap Screws in Lieu of Tap Bolts

REVISED 6-30-50 Anchor Bolts
REVISED 7-6-50 Angles at End bent
7-28-52 Rail Posts, Reinf. Bars and Anchor Rods

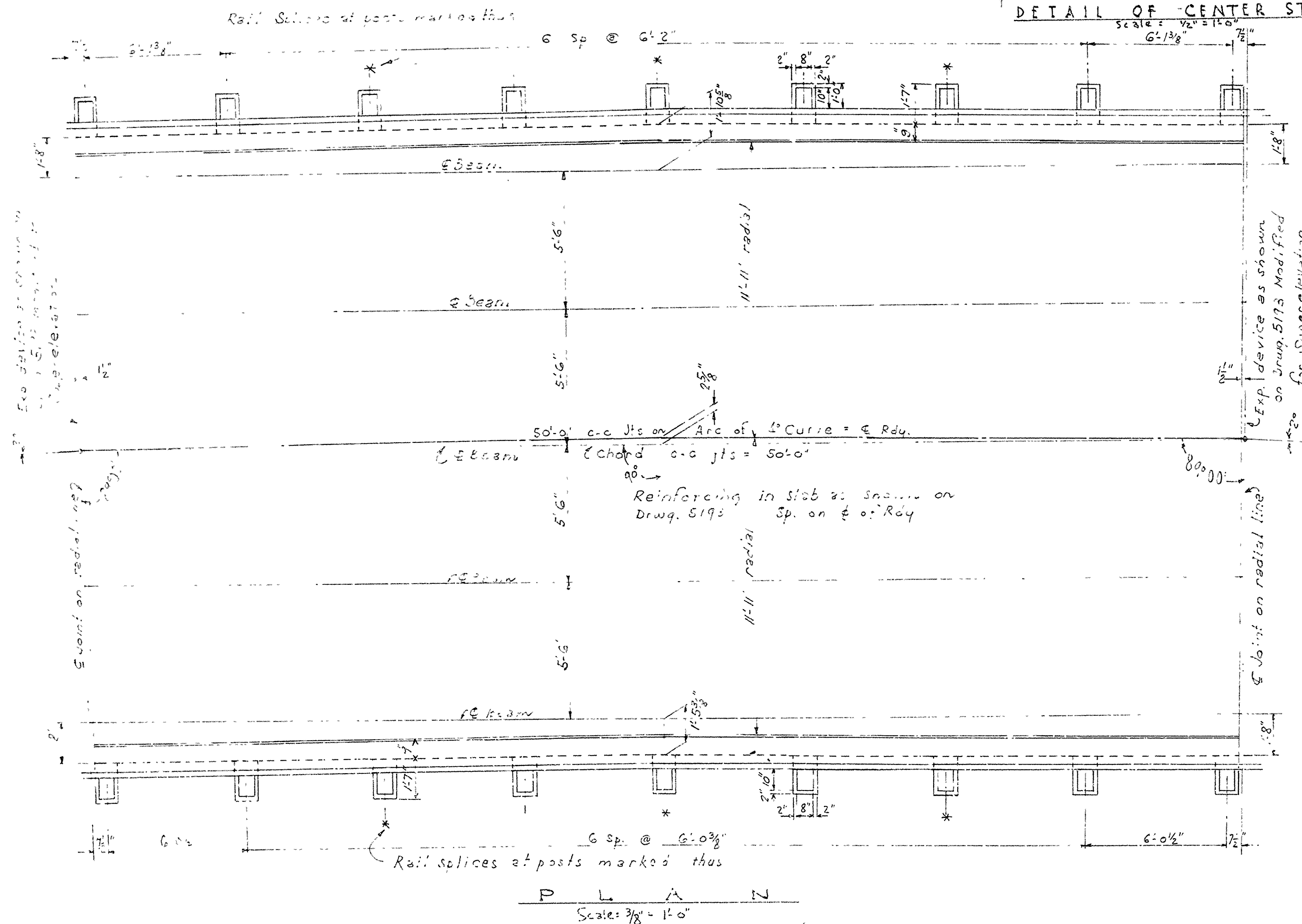
ARKANSAS STATE HIGHWAY COMMISSION
LITTLE ROCK, ARK.
Drawn By: L.A.M. Date: 8-28-47
Traced By: E.E.S. Date: 9-30-47
Checked By: _____ Date: _____
BRIDGE NO. _____ DRAWING NO. 5/93

Same as detailed on Drwg. No. 5193 except slope

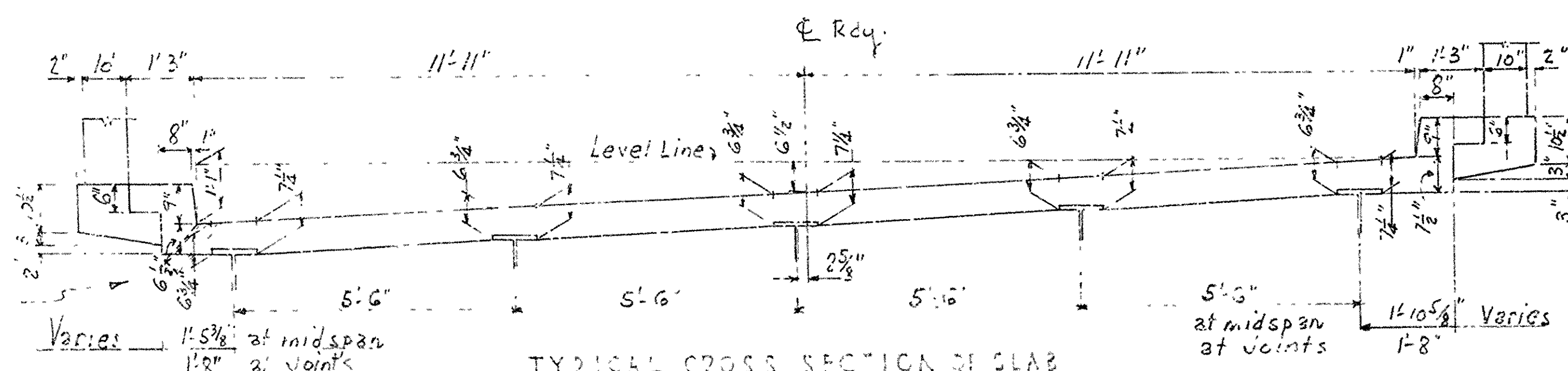


DETAIL OF CENTER STRUT

Scale: 1/2" = 1'-0"

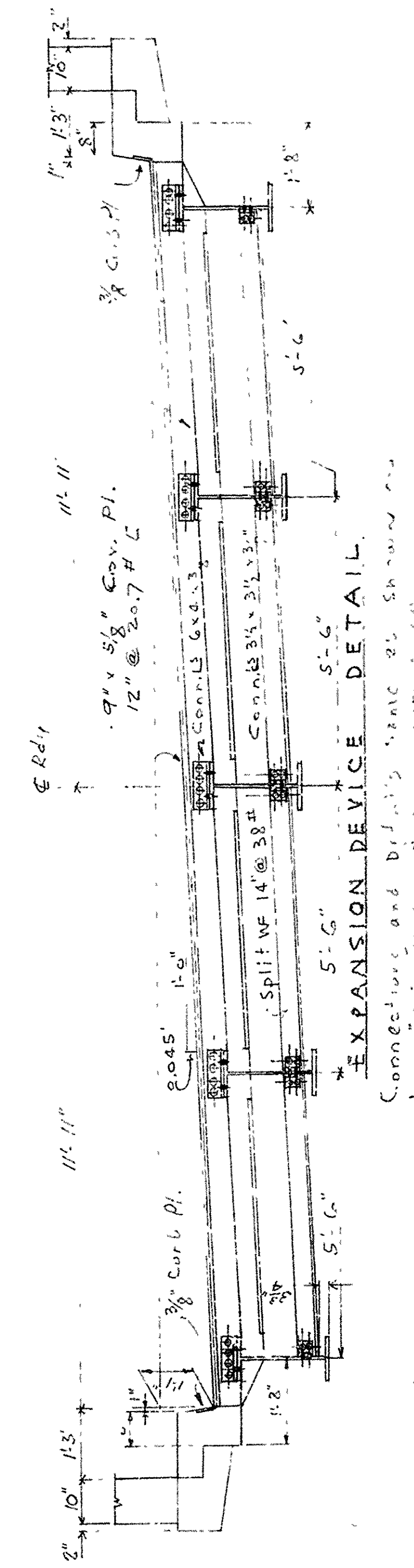


PLAN
Scale: 3/8" = 1'-0"



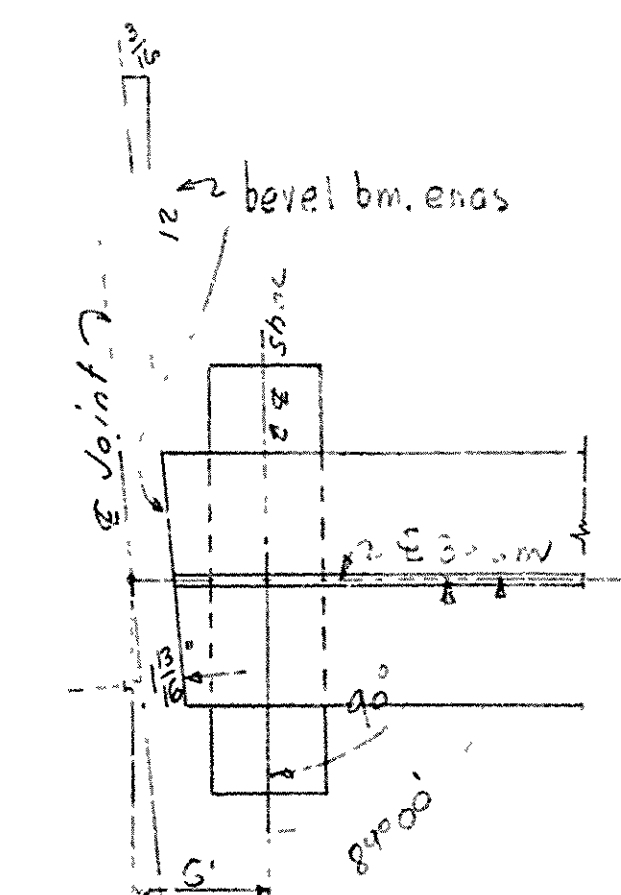
TYPICAL CROSS SECTION OF SLAB
Reinforcing Same as shown on Drwg. 5193

Place C.I. drains on this side of Rdy only.

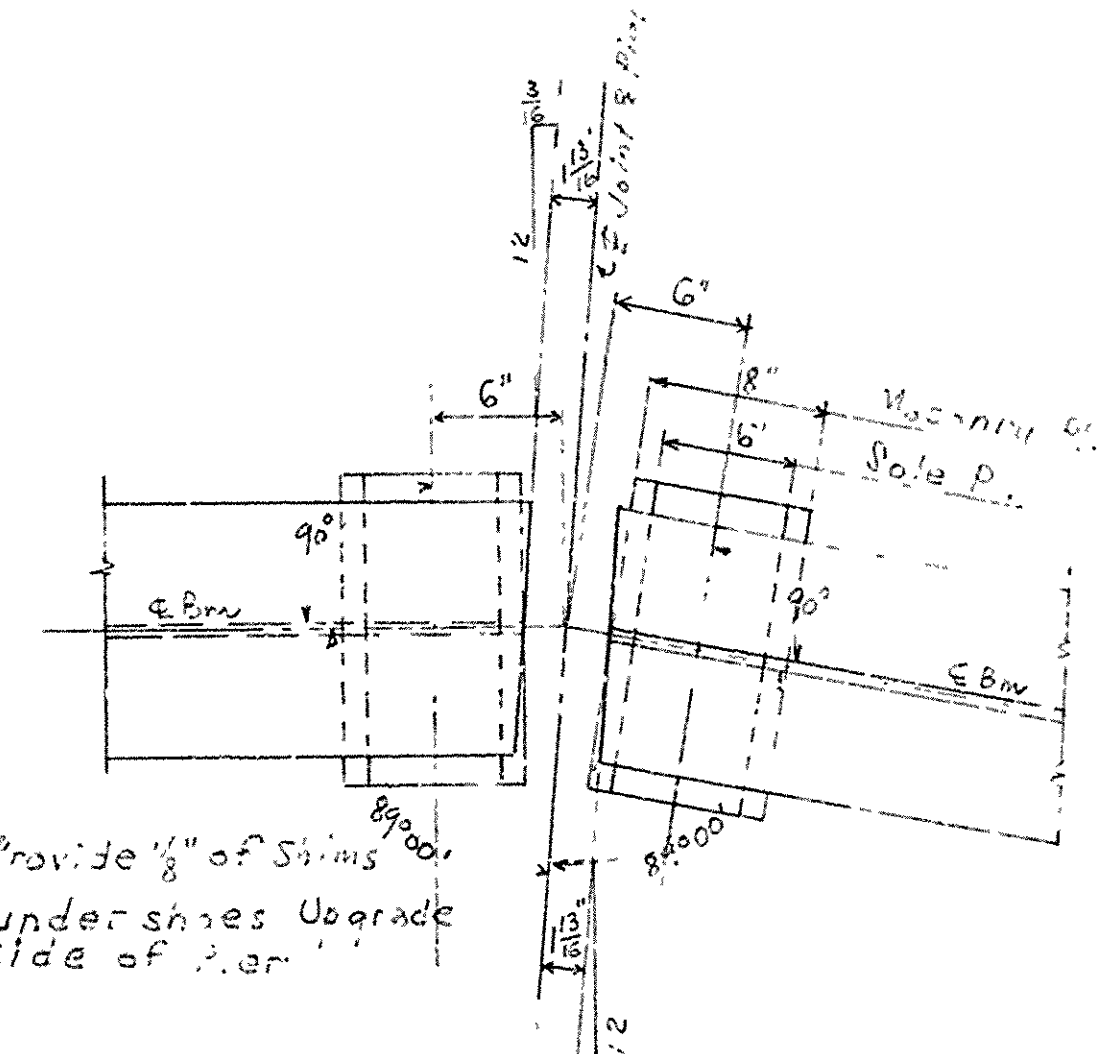


EXPANSION DEVICE DETAIL

Connections and details same as shown on Drwg. 5193



LOCATION OF SHOES. END RENT
Scale: 1/2" = 1'-0"



LOCATION OF SHOES AT PIERS 1 & 2
Scale: 1/2" = 1'-0"

Note: This drawing shows changes due to location of bridge on 4" curve. See drawing No. 5193 for details which apply except as modified by this drawing.

DETAILS OF
STANDARD 50-TBM SPANLED APPROACH
24" CLRDY - 14" G.C. - STEEL PLATE RAIL

REVISED M or corrections 7-6-50

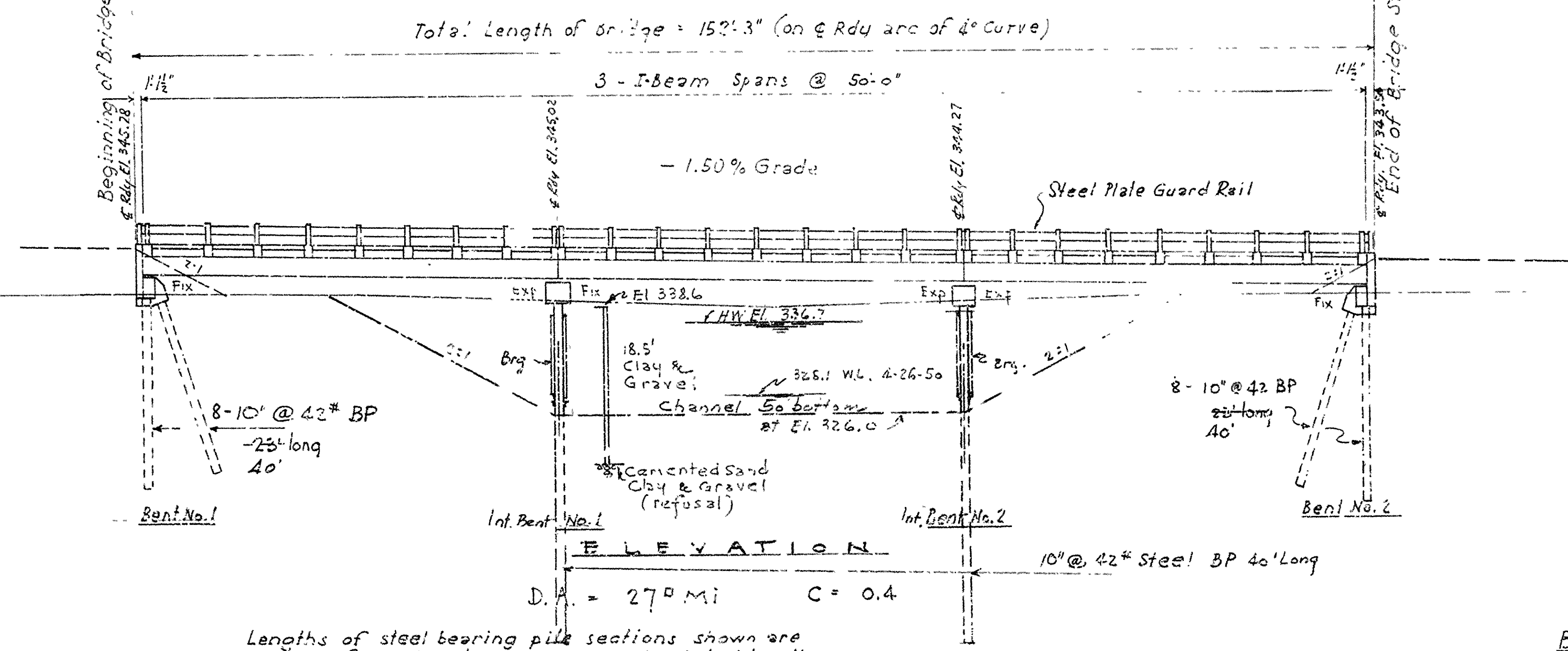
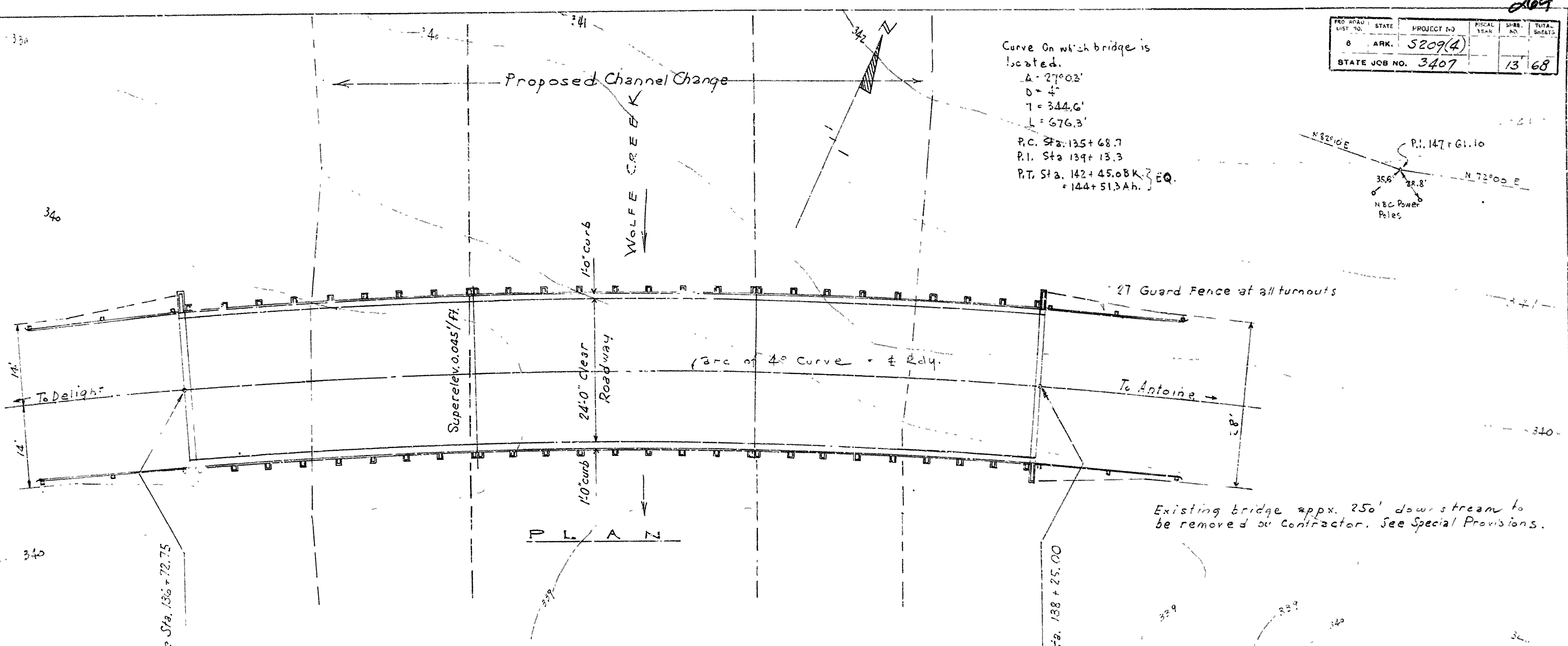
APPROVED BY
W. A. H. H. H.
Bridge Design Engineer

ARKANSAS STATE HIGHWAY COMMISSION
LITTLE ROCK, ARK.
Drawn By: J. A. W. Date: 6-29-50
Traced By: J. A. W. Date: 7-4-50
Checked By: J. A. W. Date: 7-4-50
Scale: As noted
BRIDGE NO. DRAWING NO. 5198

264

PRO. ROAD DIST. NO.	STATE	PROJECT NO.	FISCAL YEAR	SHEET NO.	TOTAL SHEETS
0	ARK.	5209(4)		13	68
STATE JOB NO. 3407					

ITEM No.	ITEM	UNIT	Bents No. 1 & 2	Spans 1-5 Incl.	TOTAL
103	Dry Excavation For Structures	Cu.Yd.	35		36
103	Wet Excavation For Structures	Cu.Yd.			
103	Solid Rock Excavation For Structures	Cu.Yd.			
SP802	Class 'A' Concrete For Bridges	Cu.Yd.	2142	82.43	2224.43
SP802	Class 'S' Concrete For Bridges	Cu.Yd.	2960	17040	20000
803	Reinforcing Steel	Lb.	12	300	312
SP803	Steel Plate Guard Rail	Lin.Ft.	1434	96466	97900
SP807	Structural Steel in Beam Spans	Lin.Ft.	378		378
SP807-7	Steel Bearing Piling (10")	Each	1		1
929	Bridge Name Plates (Type 'B')	Comp.Item			
SP1052-7	Removal of Existing Bridge Structures				100%



B.M. Nail in power pole CR 11' S-2. 133+53 El. 328.66

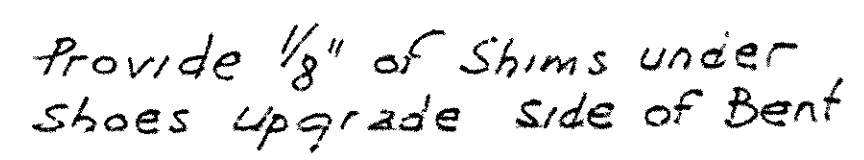
LOADING: H15
 Strasses:
 Class 'A' Concrete 100#/# n=15
 Class 'S' Concrete 1000#/# n=10
 Reinforcing Steel 1800#/#
 Structural Steel 1800#/#
 For details of End Bents See Drwg No. 7813
 For details of Int. Bents See Drwg. No. 7814A
 For details of Superstructure See Drwgs. No. 5195 & 5198

Lengths of steel bearing pile sections shown are assumed for estimating purposes only. Actual lengths to be determined by driving one 28' test pile to refusal in each of Bents 1 & 2

REVISED Minor corrections 7-6-50
 Int. File Bents 4-3-51
 Quantities 4-3-51

APPROVED BY
 [Signature]
 Bridge Design Engineer

LAYOUT OF
 BRIDGE OVER WOLFE CREEK
 DELIGHT-ANTOINETT ROAD
 PIKE COUNTY
 ROUTE 26 SEC. 3
 ARKANSAS STATE HIGHWAY COMMISSION
 LITTLE ROCK, ARK.
 Drawn By SAU Date: 6-26-50
 Checked By JTB Date: 7-3-50
 Scale: 1 in = 10 ft.
 BRIDGE NO. 2735 DRAWING No. 7812



DETAIL OF PILE SPLICE.
Scale: 1"=1'0"

PILE ENCASEMENT DETAIL
(NOT USED)

** 40' Lengths

ARKANSAS STATE HIGHWAY COMMISSION
LITTLE ROCK, ARK.
Drawn By: E.A. Mcriter 3-27-51 Scale:
Chd. By: ~~3-27-51~~ Date: 3-27-51
BR. NO. 2735 DRWG. NO. 7814A